



Belleville News

2 December 2022

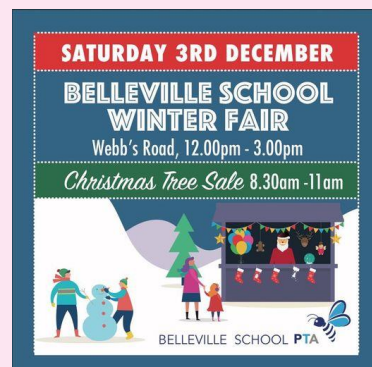
Dear Parents and Carers,

We are looking forward to seeing everyone at our Christmas Fair tomorrow. It is always a fantastic event for the Belleville school community and thank you to everyone that attends tomorrow and supports the school.

I'd like to say a particular thank you to the PTA for the extraordinary effort that they put in to make sure it is such a huge success. Many thanks to Nicky, Louise, and their team on behalf of all of us - we really appreciate it. Enjoy the Fair!

John Budden

Executive Headteacher



We are looking forward to the PTA Winter Fair on Saturday!

The Christmas tree sale is from 8.30am to 11am.

The Winter Fair is from 12 noon until 3pm. Alongside loads of Christmas stalls, Santa's Grotto is returning this year. Tickets are [available here](#) for timed entry slots 12noon – 3pm and include a small gift for each child.

There will also be a Christmas Raffle and tickets are [on sale here](#) until Friday evening and then in person at the Fair.

Dates for your diary:

Belleville PTA School Winter Fair and Christmas Tree Sale – Saturday 3 December, Webb's Road.

Christmas Lunch and Christmas Jumper Day – Tuesday 6 December – wear your cheeriest jumper! £2 donations where possible please for Save the Children.

Last Day of Term - Friday 16 December – **Own Clothes Day**. **Please note earlier finish times:** Year 1 & Year 2 - 2.15pm, Years 3, 4, 5 & 6 – 2.20pm, Reception 2.25pm, Nursery pm – 2.30pm

INSET Day - Tuesday 3 January. School closed for children.

First Day of Term - Wednesday 4 January, usual timing.

Meet the Executive Headteacher – The final events are:

- [Nursery & Reception](#), Webb's Road, Thursday 19 January, 9.15am
- [Reception](#), Meteor Street, Thursday 19 January, 11.15am

Follow Us on Social



[@belleville_school](#)
[@bellevillesch](#)

Our first priority is to ensure all children and adults are safe.

Please do talk to any member of staff if you have any worries for yourself or others in our community.



If you are worried about something
If you are worried about someone else.....

You can talk to **ANYONE** who works for the school

Safeguarding is the responsibility of EVERYONE





Belleville News

School Council – Wandsworth Food Bank Collection – Your help please

This half term School Council have been working hard thinking of different ways to fundraise and give back to the local community. We are pleased to share that the non-uniform day raised **£760.15** for **Children in Need!** Thank you so much to all who donated and dressed up for the occasion.

School Council's next initiative is to collect food and goods to donate to the [Wandsworth Food Bank](#). We are excited to have collaborated with the PTA and will have a collection stall at this Saturday's school fair.

Wandsworth Food Bank are in desperate need of the following items: new hot water bottles (with covers please), new warm blankets, crisps, packet soup, UHT milk (full-fat or semi-skimmed), hot chocolate, tinned fruit, tinned potatoes, tinned meat (chicken or beef please), tinned custard, gluten-free long-life food, deodorant (unisex) - roll-on and spray and tin openers.

Any other donations will be greatly appreciated. We are excited to see you all at the Winter Fair. If you are unable to attend and would still like to donate, children can bring their donations into school next week for School Council to collect. We will be delivering them to the Food Bank during the last week of term.



Thank you Belleville! Eleven huge sacks of coats were collected from the Belleville community this year, four more than last year. These will be greatly appreciated by people in need all over London.

Belleville Choir

Our Belleville Choir (Years 2-6 from both sites) were joined by three other local schools to sing for the switching on of the Northcote Road Christmas tree and lights. They performed: O Come all Ye faithful, Silent Night and We wish you a Merry Christmas.



#HalfTimeChallenge

For those of you who are following the World Cup, or those that would like to keep active, the Youth Sport Trust has released a new physical activity programme linked to the World Cup.

#HalfTimeChallenge is designed to get families active and having fun during half-time breaks across the FIFA World Cup. Please see the link below for further details and how to enter their competition. In addition to their physical activity programme, there are also resources to design your own football kit, football and dream team. [FIFA World Cup 2022 #HalfTimeChallenge - Youth Sport Trust](#)



Belleville News

Year 3

Year 3 have enjoyed an exciting two days designing and making pizzas this week. The children thought carefully about their target market and designed a pizza to appeal to this group of people. They then made a pizza from scratch using a yeast-based dough.



Free tickets to AFC Wimbledon Women's Match on Saturday 11 December

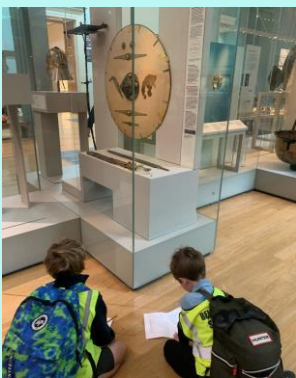
AFC Wimbledon Women are offering free tickets to local schools for their match against Gillingham Women at Plough Lane on Saturday 11 December, 2pm in the 3rd Round of the Women's FA Cup.

Tickets will be offered on a first-come, first-served basis. If you are interested in tickets for your family, up to a maximum of four, please [complete this form](#) by 3pm on Tuesday 6 December. We will then be back in touch with you before Friday with details of tickets and how to collect them.

Year 4 Visit the British Museum

Over the last two weeks, Year 4 have visited the British Museum as part of their topic on the Anglo-Saxons. They were able to have a look at the genuine artefacts found at the Sutton-Hoo excavation in 1939, as well as replicas to give them an idea of what the items would have looked like during this period.

It was fascinating to see the intricate detail on the artefacts and use them to learn more about the jobs and lifestyle of Anglo-Saxons. It was a fantastic trip and the children were a real credit to Belleville!





Belleville News

French

This half term, pupils in Years 3, 5 and 6 learnt French across the curriculum in history and science.

Year 3 learnt how to tell somebody in French the key facts and people involved in the history of the Roman Empire. They learnt the days of the week and how these are related to the Roman gods and goddesses. They also learnt how to explain what the most famous Roman inventions were.

Year 5 learnt how to name and recognise the planets on a solar system map. By learning to say an interesting fact about at least four of the planets, they learnt to explain the rules of adjectival agreement clearly in French and apply when using colours to describe objects.

Year 6 named the countries and languages involved in WW2. They learnt to say what the differences were in city and country life during the war.

In **Year 4** the children learnt how to say whether they live in a house or an apartment and say where it is. They repeated, recognised, and attempted to spell up to ten nouns (including the correct article for each) for the rooms of the house and to tell somebody in French what rooms they have or do not have in their home.

Walk: say where we live

INSTRUCTIONS: Using the pictures provided to guide you, pretend to be the characters below and write whether you live in a house or an apartment and say where it is. Use the word bank to help you.

1)
J'habite dans un appartement à la campagne.

3)
J'habite dans une maison en ville.

2)
J'habite dans une maison au bord de la mer.

4)
J'habite dans un appartement à la montagne.

WORD BANK

J'habite ✓	une maison ✓	un appartement ✓	au bord de la mer ✓
dans un village ✓	en ville ✓	à la montagne ✓	à la campagne ✓
dans ✓			

La Mythologie Romaine

WALT We are learning to name some Roman gods and goddesses.

	Mercure		Jupiter
	Vénus		Saturne
	Mars		Aphrodite
	Neptune		Mars

Handwritten notes: Jupiter ✓, Mercure ✓, Vénus ✓, Saturne ✓, Aphrodite ✓, Mars ✓

La Seconde Guerre Mondiale

WALT We are learning to name some countries and languages involved in the WW2.

Où est ...

l'Angleterre	l'Italie	la France
l'Allemagne	la Pologne	la Tchécoslovaquie

- 1) En Angleterre on parle l'anglais
- 2) En France on parle le français
- 3) En Italie on parle l'italien
- 4) En Pologne on parle le polonais
- 5) En Allemagne on parle l'allemand
- 6) En Tchécoslovaquie on parle le tchèque
- 7) Aux États-Unis on parle l'anglais

Alumni News – Lisa Taylor

Lisa has donated a signed copy of her new book for Early Years to the school library. Here are her memories of Belleville.

'I am a school teacher and newly published author of "[Beach.](#)" I attended Belleville Primary in the 1970s when Mr Jerry was the Headteacher. My memories of Belleville are full of joy and laughter. I played marbles on the stone steps and galloped "like wild horses" with my friends in the playgrounds.



I played the recorder and piano and delighted in listening to The Lion, the Witch, and the Wardrobe. The very sound of the word Belleville makes me smile and believe I can do anything....'



Belleville News

Christmas Concerts

Nursery - am	Monday 12 December	11.00am	Nursery
Nursery - pm	Wednesday 14 December	2.30pm	Nursery

Reception

RB	Wednesday 7 December	10.00am	Webb's - Lower Hall
RP	Wednesday 7 December	2.30pm	Webb's - Lower Hall
RH	Thursday 8 December	10.00am	Webb's - Lower Hall
RZ	Thursday 8 December	2:30pm	Webb's - Lower Hall
RC	Friday 9 December	10.00am	Meteor - Hall



Year 1	Wednesday 14 December	11.15am	St. Michael's Church, Cobham Close, SW11 6SP
Year 2	Tuesday 13 December	11.15am	St. Michael's Church, Cobham Close, SW11 6SP
Year 3	Friday 9 December	2.15pm	Webb's - Playground
Year 5	Monday 12 December	2.15pm	Meteor - Playground
Year 6	Tuesday 13 December	2.15pm	Webb's - Playground

At our Christmas concerts, we will be collecting donations for two charities – St Michael's Church, where we are holding our Year 1 & 2 performances, and St. George's Hospital. There will be an opportunity to donate cash in our collection buckets or give a £2 donation using our card readers.

Parents/Carers are also invited to the performance of the School Band on Friday 16 December at 2pm in the Castle in the Webb's Road playground.

Wandsworth Council Leisure Facilities

Wandsworth Council are currently undertaking a review of the Leisure Facilities in the borough and are collecting information which will guide decision making about future leisure centre provision. As They are currently running an online survey for those who live, work or exercise in the borough to participate in. If you would like to [complete their survey, please click here](#) by Friday 16 December.

School Term Dates

Autumn Term

Last day of Autumn 2: Friday 16 December

Spring Term

INSET DAY: Tues 3 Jan – school closed to children

First day of Spring 1: Wednesday 4 January

Last day of Spring 1: Friday 10 February

Spring Half Term Holiday: Monday 13 – Friday 17 February

First day of Spring 2: Monday 20 February

Last day of Spring 2: Friday 31 March

Summer Term

INSET DAY: Mon 17 April – school closed to children

First day of Summer 1: Tuesday 18 April

Bank Holiday: Monday 1 May – school closed

Last day of Summer 1: Friday 26 May

Summer half term: Monday 29 May – Friday 2 June

INSET DAY: Mon 5 June - school closed to children

First day of Summer 2: Tuesday 6 June

Last day of Summer 2: Friday 21 July